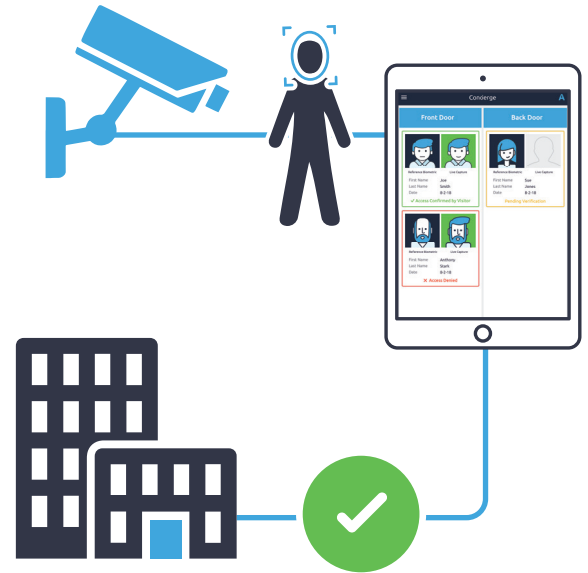


When attending an event or entering a building, everyone expects to feel safe with reliable, effective security—for ourselves and loved ones. But waiting on line to show your ID at the door is friction that seriously interrupts the flow of things.

Ipsidy has now merged the digital access credential management and mobile biometric application capabilities of its Access solution with the high-speed performance and edge device detection capability of the Ayonix 3D facial recognition technology. The enhanced solution filters facial images extracted from IP cameras and video feeds, rapidly matches them to stored biometric images, classifies all entrants and provides real-time alerts to site attendants in Ipsidy’s Concierge mobile tablet application.

It’s a powerful mix of technology that provides businesses, institutions, schools, hospitals and event venues with cutting-edge biometric access management tools with minimal capital investment.



Features	Benefits
<ul style="list-style-type: none"> ✓ Continuously matches identities against customer-defined ‘Authorized’, ‘Unknown’ and ‘Watch’ lists 	<ul style="list-style-type: none"> ✓ Frictionless entry and exit ✓ No need to check IDs or swipe cards
<ul style="list-style-type: none"> ✓ Real-time monitoring of all transactions and alerts provided in Ipsidy’s Concierge app 	<ul style="list-style-type: none"> ✓ Offers convenient, mobile tool for perimeter management ✓ Threat list alerts offer proactive protection
<ul style="list-style-type: none"> ✓ Permanent and temporary digital credentials issued to mobile devices, protected with biometric certainty ✓ Authorized users can invite visitors directly from the Ipsidy app 	<ul style="list-style-type: none"> ✓ No more concern about lost or stolen access credentials ✓ Increased security ✓ Enhanced user convenience and trust ✓ Updated credential listing in real-time
<ul style="list-style-type: none"> ✓ IP Cameras become “Access Authorization Points”, not just monitoring points 	<ul style="list-style-type: none"> ✓ Transform existing camera investments into active Access authentication tools ✓ Minimizes capex investment

How it Works

Users—including residents, tenants, government, hospital and school personnel are pre-enrolled and issued permanent or temporary digital credentials via the Ipsidy app on their registered smartphones. Authorized users can invite visitors from within the Ipsidy app, with real-time updates to the site's 'Dynamic White List'.

Entrants are automatically identified at a protected perimeter or event by a camera enhanced with Ayonix software. Access quickly matches their identity against customer-defined 'Authorized', 'Unknown' and 'Watch' lists. Access notifies site attendants and security personnel via the mobile Concierge app.



Ipsidy's Concierge app provides real-time monitoring of security transactions and alerts, all from the convenience of a tablet device. Authorized visitors can be welcomed by name and "waved" through when a personal touch is desired – with biometric certainty. Site attendants receive immediate notifications when persons who do not have required credentials, or who are on a watch list, attempt to access a location, so that appropriate security measures can be taken.



Together Ipsidy and Ayonix are delivering solutions that offer businesses, institutions, schools, hospitals and event venues the next generation of frictionless, biometric access management. The solution streamlines security operations, speeds up security lines, and is convenient and frictionless for authorized residents, patients, students, visitors and guests. Most importantly, the combined biometric solution fosters a greater sense of safety and strengthens peace of mind.